

2024-25

Annual Report



**owl creek
conservancy**
A Knox County Land Trust



Our Mission

The Owl Creek Conservancy is a private nonprofit organization of a Board of Trustees, led by an Executive Director, dedicated to conserving natural and agricultural lands in the Knox County area through widespread private action. We work with landowners for the public good to maintain and to improve the quality of life now and in the future by conserving farmlands, stream corridors, aquifer- and watershed-protection areas, wildlife habitats, woodlands, scenic vistas, and ecologically sensitive areas of environmental, historic, and community importance.





A note from our President



This past year, the Owl Creek Conservancy continued its mission to protect and preserve more lands, farms, forests, and open spaces that define our community's rural character. With the support of our members, partners, and volunteers, we have achieved important milestones in land conservation, stewardship, and outreach. We also marked a special milestone— 25 years ago a small group of concerned citizens began the work to conserve the lands, waters, farms, and open spaces that shape the character of our community. When our founders first came together in 2000 they shared a vision: that future generations should be able to walk through open fields, hike forest trails, and see working farms thrive. They recognized that protecting land is not just about preserving scenery—it is about safeguarding the very foundation of our community's way of life.

For our anniversary, our Annual Gathering included special invitations to our original board members—the visionaries who first brought the Owl Creek Conservancy to life more than two decades ago. This gathering was both a reunion and a celebration, with attendees sharing their inspirations that lead to the idea of protecting farmland, forests, and open spaces, as well as sharing the challenges of building an organization from scratch and securing the land. Their stories reminded us how much dedication and persistence it took to establish the strong foundation we now build on. Because of their leadership, we have grown into an organization that has earned the trust of hundreds of community members. Today's board members and volunteers left the event with a renewed sense of commitment, motivated by the passion and foresight of those who came before us. We are deeply grateful to our original board for their vision and perseverance.

It has been a year of growth, collaboration, and renewed commitment to conservation. Looking ahead, the challenges of climate change, development pressure, and farmland loss remind us that our mission is more urgent than ever. We are committed to growing stronger; protecting more land, supporting more landowners, and ensuring that land conservation continues to be a community priority for the next 25 years and beyond. We are committed to protect additional lands, expand educational outreach, and strengthen relationships with farmers, landowners, and community partners. Thank you for being part of this important work. We are proud of what we have accomplished together—and inspired by the opportunities ahead. Thank you for the last two years, as I served as President.

Kim Davidson, President 2022-24

Introducing the **Fletcher-Dye Easements**

Chris Fletcher and his wife Althea Dye have owned the family farm for just shy of thirty years. On their northern Knox County (OH) property, which features rolling farmland, mature hardwood forest and a tributary of the Kokosing River, they grow crops, raise beef cattle, and keep chickens for eggs. They've also got several personable and friendly cats. They're active community members involved in Lions Club International and Pheasants Forever, and Chris is an avid hunter.

It's just the kind of place Owl Creek Conservancy is hoping to protect from development.

When Fletcher approached OCC Director Vicki Kauffman at the Bladensburg SERTOMA Gun Bash back in 2022, it became the start of Fletcher and Dye's journey to conserving their land from future development. Kauffman, who was hired in the role of director earlier that year, guided them through the process and encouraged them to apply for the Ohio Department of Agriculture's Farmland Preservation Program during the 2023 grant cycle.



**Fletcher (left) and Dye on
their front porch**
Photo: Gregory Spaid

Ohio's Farmland Preservation Office assists property owners in protecting agricultural lands, providing education and resources on their website, including a toolkit and FAQ section. They also administer the Preservation Program, which provides between \$6M and \$6.5M annually for the purchase of agricultural easements through the Clean Ohio Local Agricultural Easement Purchase Program (LAEPP). Additionally, the office certifies land trusts and other entities to serve as local sponsors for the LAEPP, enabling them to direct the LAEPP grant application process for landowners, receive funds from the Ohio Department of Agriculture (ODA), and manage agricultural easements.

As one of Ohio's certified local sponsors, Owl Creek Conservancy assists landowners like Fletcher and Dye in the application process and monitors conserved properties. Citing a desire to protect their land from division and development, they successfully completed the LAEPP process on two parcels totaling 160 acres and closed on December 20, 2024.

The Fletcher property is now a part of over 5,700 acres of land in four Central Ohio counties protected from development by Owl Creek Conservancy.





A fresh start for the future

Owl Creek Conservancy celebrates ribbon cutting at new headquarters



Nearly fifty members of the Knox County community came together on March 13th, 2025 to celebrate not only the 25th anniversary of Owl Creek Conservancy but also the ribbon cutting on our new office in downtown Mount Vernon. The event was both a milestone and a homecoming, bringing together longtime supporters, new friends, and civic leaders to honor the Conservancy's past achievements while looking forward to the future.

Located in the Blue Ash Plaza at 314 South Main Street, the new downtown office represents more than just a change of address. Its central location increases accessibility and visibility, ensuring that community members can easily stop in to learn more about conservation efforts or seek guidance on protecting their land. The space itself was designed to be bright, welcoming, and functional, with two offices, a shared atrium that encourages collaboration, and accessible off-street parking to accommodate visitors. This new headquarters provides Owl Creek's staff with the tools and environment they need to continue the important work of maintaining Knox County's rural identity, meeting with community partners, and advising property owners on conservation easements.



The ceremony, led by the Knox County Chamber of Commerce, began with a welcome and introductions by their Executive Director, Carol Grubaugh, who was flanked by other Chamber of Commerce staffers bearing a red ribbon and oversized ceremonial scissors. A number of dignitaries from the State of Ohio and the City of Mount Vernon were on hand to offer congratulations and commendations:


- Commendation from the Ohio Auditor of State Office, presented by Regional Liaison Scott Brown on behalf of Ohio Auditor Keith Faber. Brown spoke on Owl Creek's efforts to preserve Knox County's rural character and congratulated the organization on the 25th anniversary.
- Commendation from the 136th General Assembly of Ohio, presented by State Representative Mark Hiner of Ohio House District 98, with congratulations on the 25th anniversary and new office. Hiner also presented Amy Henricksen of the Philander Chase Conservancy with a similar commendation to commemorate their 25th anniversary, which is also this year.
- Proclamation from the office of US Congressman Troy Balderson (Ohio District 12), presented by a representative of his office, with congratulations and anticipation for the future.



- Statement from Mount Vernon Mayor Matt Starr, presented by Todd Hill, praising Owl Creek's partnership with the City of Mount Vernon and engagement with the community.

Owl Creek Conservancy Executive Director Vicki Kauffman briefly addressed the crowd prior to cutting the ribbon. She expressed heartfelt gratitude to the community, acknowledging the countless volunteers, landowners, and supporters who have made the Conservancy's mission possible over the past quarter century. Kauffman spoke of her hopes for continued partnership with local organizations and community members, reminding everyone that conservation is a shared responsibility. With members of the Owl Creek Board of Directors looking on, Kauffman cut the ribbon and was showered with both confetti and applause before inviting attendees into the new office for refreshments and conversation.

All of us at Owl Creek would like to offer a heartfelt "thank you" to everyone in the community who helped move us toward this goal over the last 25 years. We simply could not have achieved our goals without your support. Every donation, volunteer hour, and word of encouragement has strengthened our resolve. We deeply value your contributions, your hard work, and most importantly, your dedication to preserving the natural beauty and agricultural identity of our beloved Knox County. As we look ahead, this new office stands as a symbol of what we can accomplish together—a place where ideas are shared, partnerships are forged, and the vision of a thriving rural community continues to grow.



Grantor Dan Galbraith discusses his motivation for protecting his land.

Photo: Vicki Kauffman

Shared Vision, Lasting Promise:

Knox County Grantors Cement a Legacy of Natural Stewardship

Conserving the rural character of Knox County is a partnership between the Owl Creek Conservancy and area landowners. The Conservancy brings oversight and enforcement of the landowner's wishes to the table; the landowner brings the beautiful, fertile, unspoiled Knox County land. To achieve our mutual goal of permanent land protection, we very much need one another.

In recognition of this partnership and in honor of the people who make it all possible, the Conservancy hosted its first-ever Grantor Event the first weekend of September at Whaley Park in Fredericktown. The trustees and staff served a picnic-style lunch for landowners of homegrown hamburgers provided by trustee Beth Waller and her husband Jay Dorsey and cooked on the patio by Land Steward Jeff Wells. An excellent beer was brewed specially for the event by Vice President Harry Itagaki, to the delight of everyone.

**President
Kim Davidson
asked Grantors,
“Why did you
choose to conserve
your land?”**

President Kim Davidson asked Grantors why they chose to conserve their land. Their answers spoke volumes.

Jerry Simpson (2005) recalled happy memories of deer hunting in Knox County, and chose to conserve 30 acres, saying, "I just wanted to leave it as an unspoiled part of the county with no houses on it."

Beth Waller, a Philander Chase Conservancy Grantor and OCC Trustee, wanted to protect farmland and greenspace for future generations. She acknowledged the perpetual demand for funding for projects and encouraged other Grantors to spread the word about the ongoing need for support.

Word of mouth is also how Rick Ashcraft (2023), a first-generation Knox County farmer, initially learned about Owl Creek Conservancy. He bought his first farm on Bryant Road in 1990. He rents land from fellow OCC Grantor Alan Cassell, who told him about the Conservancy and how conservation easements work.

“What is disappearing on our watch is lost forever to the next generation. We must do our best for [them].”

-Janet Kohr

Rick remembers traveling State Route 42 regularly over the years and seeing thousands of farmland acres lost to development.

When Rick was considering placing his land in easement, there were those who told him not to do it; he would regret it; OCC would prevent him from doing what he wanted with his land. He was determined to protect his farms, however, and went forward with it. He frequently gets questions about "what he's done with his land" and responds that working with OCC "was a good deal for us."

Dan Galbraith (2011, 2013, 2022) was approached by Owl Creek Conservancy about 10 years before he committed to his first easement. Galbraith I, which is northwest of Mount Vernon on State Route 13 with the protected Ashcraft property just up the road, protects 1.3 miles of the Kokosing River and prevents development, which can have a negative impact on waterways and degrade the environment.

While Dan recognized the need for housing and utilities, he expressed gratitude that the scenic views have been protected for future generations. He encouraged other Grantors to share the benefits of land conservation with the community. In his experience, an additional benefit of partnering with OCC is the annual monitoring of the property, which he called "a priceless commodity." Galbraith I had been repeatedly violated by all-terrain vehicle trespassers who caused a great deal of damage, and he praised OCC for its quick response in getting the violations halted. Dan also called attention to



The Ashcrafts (from top to bottom): Matt, Maddy, Libby, Shirley Schmucher (left), Candace holding Sadie (right), and Rick.

Photo: Gregory Spaid

the special unspoiled qualities of Knox County, in contrast to the Columbus area where he lives.

Jeff Wells (2018) shot his first deer, an eight-point buck, on the property that he would later own. As development increased in Knox County and rented hunting ground became harder to find, Jeff began looking for acreage to purchase. His old stomping ground, owned and conserved by Bruce Lanker, was for sale. Through the purchase process, Jeff learned about land protection, became interested in OCC's mission and volunteered for the Conservancy. He later became a trustee and is now OCC's Land Steward, responsible for the oversight of the conservation values of all of the Conservancy's easements.

Janet Kohr's (2013, 2017) reasons for conserving her land have become stronger, "almost to the point of obsession" over the years. Janet is a staunch supporter of land protection, particularly of habitat, and cautioned, "What is disappearing on our watch is lost forever to the next generation. We must do our best for the next generation."

The stories shared at the Grantor Event highlight their deep-seated commitment and collective vision for the future, underscoring the profound impact of this vital partnership. As Owl Creek Conservancy and Knox County landowners move forward together, they are not just preserving fields and forests; they are securing a legacy of natural beauty and rural character for generations to come. The unwavering dedication of these Grantors proves that through cooperation, the unspoiled qualities of Knox County will forever remain a testament to the power of shared conservation, offering a hopeful and enduring example of community stewardship.



Grantor Janet Kohr explains her reasons for protecting her land.

Photo: Vicki Kauffman



Grantor and Trustee Jeff Wells conserved his land and decided to learn more about OCC's mission.

Photo: Vicki Kauffman

2024-2025 Board, Advisors and Staff

Meet our newest trustee, Mike Ambrosiani

Mike was born in upstate New York and grew up mostly in Delaware and Pennsylvania. He holds a Bachelor of Science degree in Accounting from the University of Scranton in Scranton, Pennsylvania, and a Master of Business Administration from Wilkes University in Wilkes-Barre, Pennsylvania.

Mike is a seasoned healthcare executive with over two decades of financial leadership experience in the medical sector. He served as the Chief Financial Officer (CFO) at Knox Community Hospital in Mount Vernon, Ohio, from December 2007 until his retirement in June 2024.



Photo: Mike Ambrosiani

Mike participates in the community and serves on the Freedom Center and Habitat for Humanity Boards. In his spare time, he runs, golfs, and likes landscape and nightscape photography. Mike and his wife Elaine moved to Knox County in 2008 and reside at Apple Valley Lake, where they enjoy gardening, boating, camping, and cruising.

Board of Trustees

Mike Ambrosiani, Treasurer
Kim Davidson, Trustee
Carol Detmer, Trustee
Bob Gunther, Trustee
Harry Itagaki, Vice-President
Mike O'Neill, Trustee
Greg Spaid, Secretary
Marcie Steen, President
Kyle Walls, Trustee
Beth Waller, Trustee
Jeff Wells, Land Steward

Advisors

Guy Denny
Doug Givens
Howard Gratz
Ray Heithaus
Mark Leonard
Sally Nelson
Gordy Yance

Staff

Vicki Kauffman, Executive Director



A journey through time

Mapping 25 years of Knox County land conservation

The Owl Creek Conservancy and the Philander Chase Conservancy both celebrated their milestone 25th anniversaries this year after humble beginnings in 2000. Over the years, both land trusts have grown in size and scope thanks to the support of the Knox County community. These maps, created by Justin Smith, the Knox County GIS coordinator, show the growth over the twenty-five year time period, and provide brief historical facts and data. Look how far we've come!

2000

In the year 2000, both Owl Creek Conservancy and Philander Chase Conservancy were established. At that time, Kenyon College/PCC owned two properties purchased for conservation, but no property in Knox County was permanently protected by conservation easements.

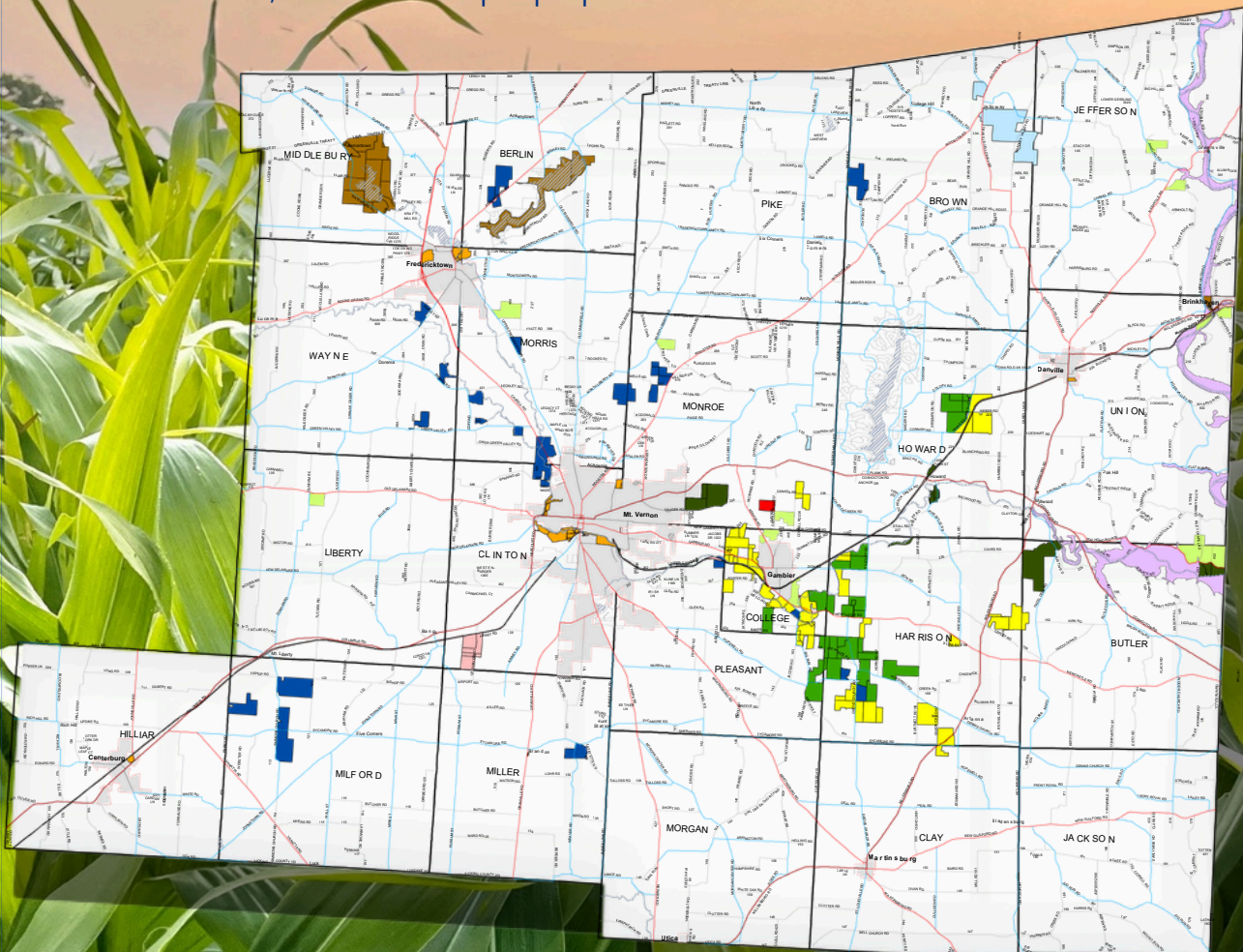


Owl Creek Conservancy's first easement was donated by the Buchwald family in 2001. Philander Chase Conservancy's first easement was the Brown Family Environmental Center, donated by Kenyon College in 2003.

Legend				
— U.S. Highways	— Township Roads	■ KCPD Lands	■ State & Fed Lands	■ Commissioners
— State Highways	— Village Roads	■ Owl Creek Conservancy	■ Philander Chase Conservancy	■ City Parks Corp.
— County Highways	— Private Roads	■ PChase Ag. Easement	■ Ramser Arboretum	■ Boundary
■ Mohawk Dam Flood Pool	■ PChase Cons. Easement	■ Other Protected Lands	■ Rivers/Lakes	

2014

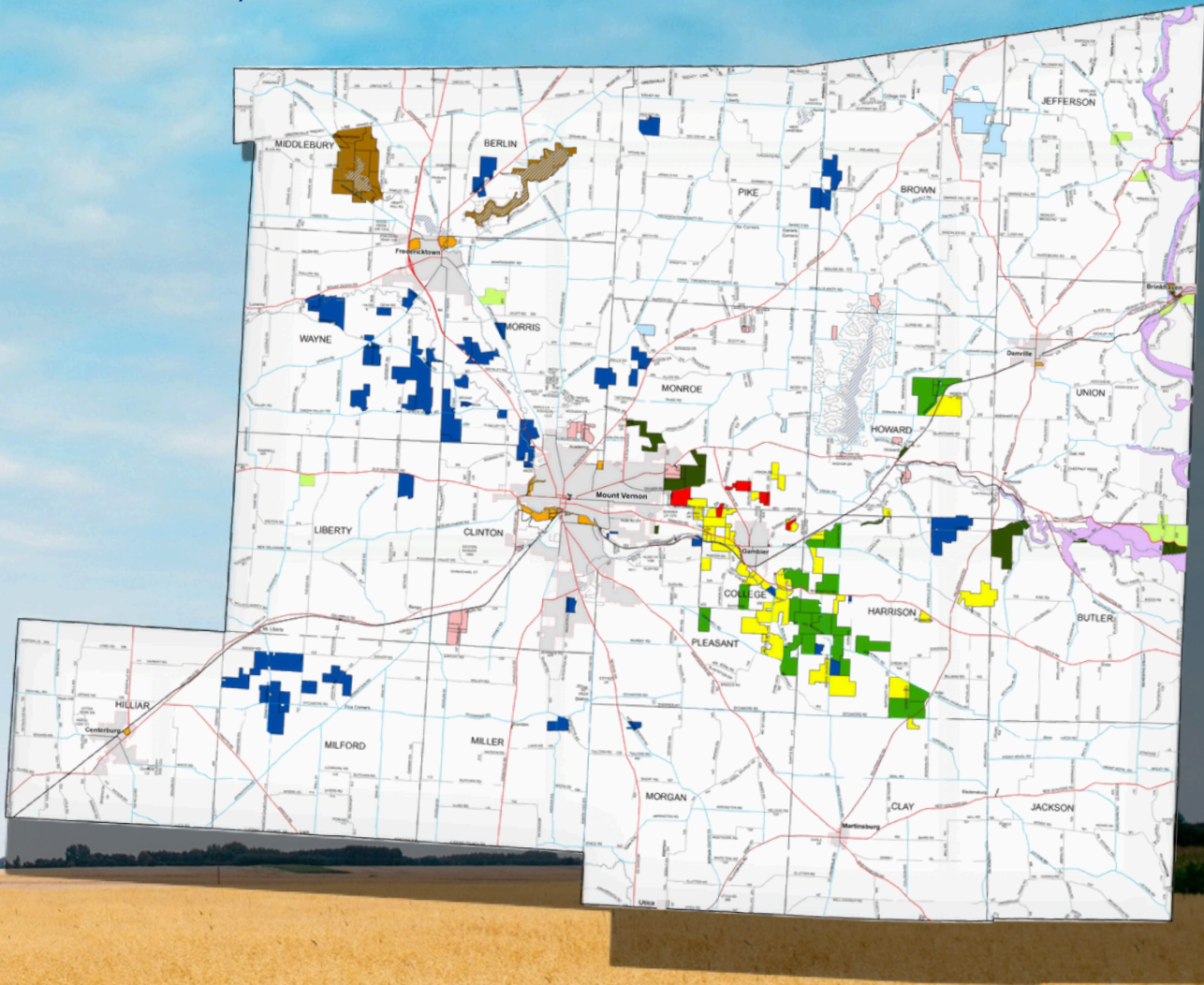
In 2014, Owl Creek Conservancy had protected 2,716 acres in 25 easements, while the Philander Chase Conservancy had protected 4,463 acres in 37 easements and 8 fee simple properties, for a total of 7,179 acres, 62 easements, and 8 fee simple properties.



Legend				
— U.S. Highways	— Township Roads	■ KCPD Lands	■ State & Fed Lands	■ Commissioners
— State Highways	— Village Roads	■ Owl Creek Conservancy	■ Philander Chase Conservancy	■ City Parks Corp.
— County Highways	— Private Roads	■ PChase Ag. Easement	■ Ramser Arboretum	■ Boundary
■ Mohawk Dam Flood Pool	■ PChase Cons. Easement	■ Other Protected Lands	■ Rivers/Lakes	

2025

By 2025, awareness of the work of both land trusts had increased greatly and the popularity of the Local Agricultural Easement Purchase Program through the Ohio Department of Agriculture had grown among the farming community.



Currently, OCC and PCC together have conserved nearly 12,000 acres, protected 15 miles of the Kokosing State Scenic River, and hold 100 easements.

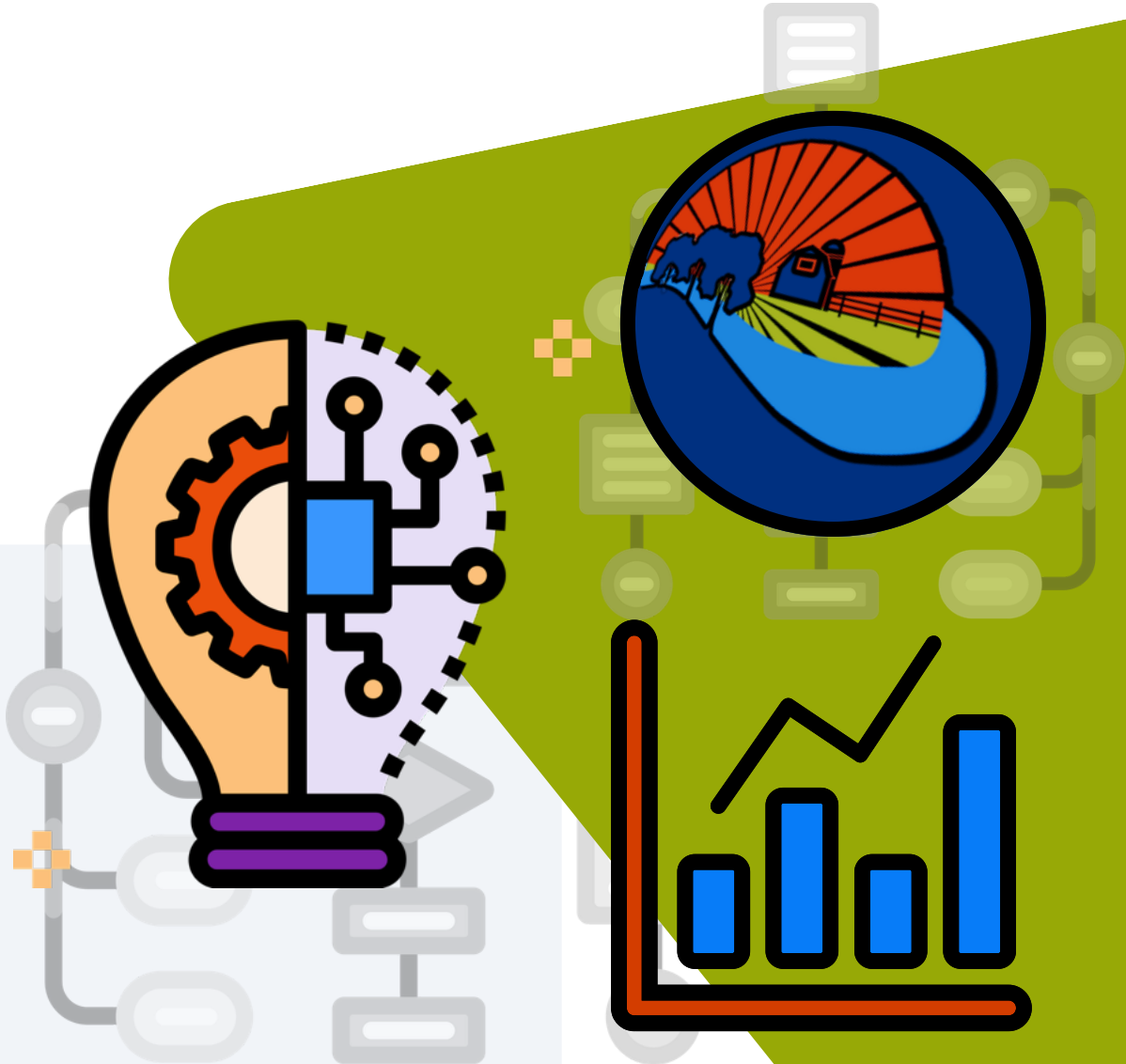




By the numbers

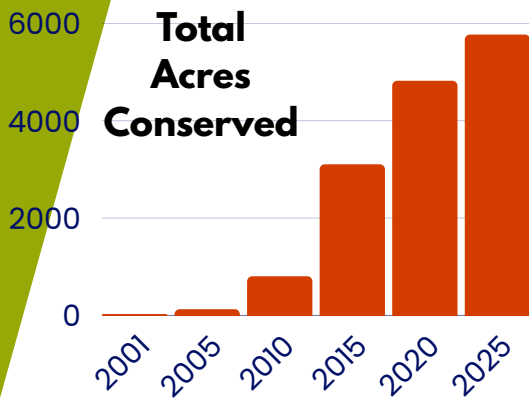
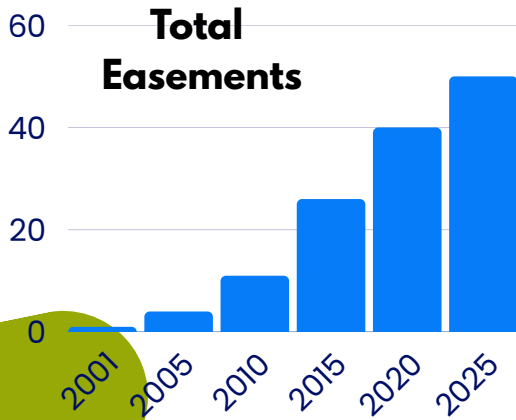
Data, details and reports

It's been a busy year for the Conservancy, and we've got the data to show for it. In the subsequent pages, you'll get an inside look at our most recent facts and figures, committee reports, life member lists, and grantor lists. Read on so you can be in the know!






Easements & Acreage



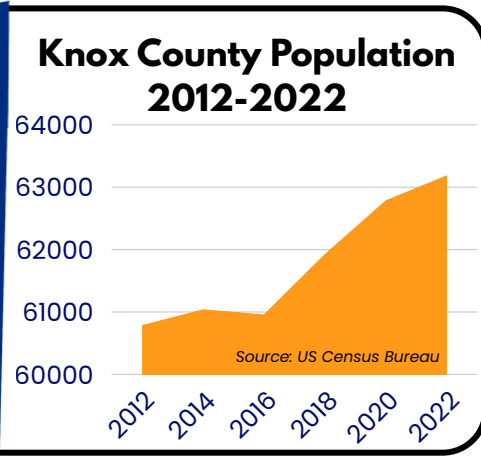
50
easements
5,770
acres protected

1,355
Acres under
agricultural easement 

 **4,415**
Acres under
conservation easement

- In the last 20 years, Knox County's farmland decreased by **12%**.
- Only **~3%** of Knox County land is permanently protected.

Sources: Ohio State University; Knox County Comprehensive Plan May 2025



Land Steward Report

Properties and Easements Monitored



Violations & Followup



Trail camera deployment, unsuccessful

Trail camera deployment, unsuccessful

Trail camera deployment, unsuccessful

Added "Do Not Enter" ribbon and debris to discourage activity

Interactions



Signage





Treasurer's Analysis of 2024 Results

Owl Creek Conservancy received gifts & contributions for fiscal year 2024, totaling \$220,769. Down significantly from 2023, however, OCC received a larger than typical gift specifically to support an acquisition easement. Total expenses were down for 2024, due to a fewer number of easement acquisitions. True fixed expenses are up year over year.

The investment markets for 2024 were favorable for Owl Creek Conservancy as we experienced unrealized gains on the portfolio of funds of \$488,547. To budget anticipated activities in 2024, distributions were planned but not taken from the funds. So, with all of these forces in play, the market value of those funds was up appreciably for the year to \$680,670.

There are now 5,771.435 acres conserved via 50 easements and reserves in the Stewardship Fund are \$410,927 or \$71.20/acre or \$8,218/easement.

The 2025 Budget accounts for increased wages and associated payroll expenses. It also anticipates increased easement acquisition expenses though there have been no new easements year-to-date. With this planned additional activity, distribution from the funds is expected.

Year-to-date 2025, the market has not been as favorable to OCC and the unrealized gains in the four funds have totaled \$13,145.

OCC Funds at the Knox County Foundation

	<u>12/30/2023</u>	<u>12/31/2024</u>	<u>Increase (decrease)</u>
Conservation Easement Acquisition Endowment Fund	284,435.88	506,828.98	222,393.10
Endowment Fund	1,966,965.56	2,321,445.41	354,479.85
Stewardship Fund	357,190.83	410,474.19	53,283.36
Memorial Endowment Fund	315,584.72	366,098.66	50,513.94
Total Funds	\$ 2,924,176.99	\$ 3,604,847.24	\$ 680,670.25
Source of Gains:			
	Investment Returns		488,547.10
	Contributions		169,549.01
	New Philanthropy Gift Matches		50,000.00
	Subtotal		\$ 708,096.11
Expenses & Contributions:			
	Administrative Expenses		27,653.65
	Grants Awarded		-
	Other Expenses		-
	Subtotal		\$ 27,653.65
Net Gain (Loss)			\$ 680,442.46

Treasurer's Report

June 2024

	FYE 2022	FYE 2023	YTD May-24
Income			
Membership Dues	37,801	27,450	63,925
Gifts / Contributions	366,051	413,421	164,790
Grants	59,405	223	
Card Sales	372	20	2,919
Investment Income	841	9,164	231,634
Total Income	<u>464,470</u>	<u>450,278</u>	
Cost of Goods Sold			
Cards	193	390	-
Gross Profit	<u>464,277</u>	<u>449,888</u>	<u>231,634</u>
Expenses			
Grants	-	-	250
Salaries & Wages	45,320	52,140	28,000
Employee Benefits	5,350	5,350	3,349
Payroll Taxes	4,056	4,587	
Management	4,174	8,273	-
Accounting	4,700	10,509	2,010
Investment Management	19,761	20,956	6,444
Other	30	87	8
Advertising	747	6,813	2,285
Office	6,488	8,023	276
Occupancy	873	596	893
Insurance	5,458	4,721	4,029
Easement Acq	91,449	221,462	315
Monitoring	11,073	1,953	4,312
Education	6,984	-	-
Membership Dues	1,674	2,200	550
Fundraising	-	-	264
Misc.	2,066	2,700	63
	<u>210,203</u>	<u>350,370</u>	<u>53,048</u>
Net Gain (Loss) for Period	<u><u>254,074</u></u>	<u><u>99,518</u></u>	<u><u>178,586</u></u>



Easement Grantors and Successor Grantors

Matt and Candace Ashcraft

Rick Ashcraft

Brian and Cindy Montgomery

- Allison L. Montgomery, *Trustee of the Montgomery Family Preservation Trust*

Brad and Melinda Lanker

Curtis Bechtel

Marion Brill

James and Maureen Buchwald

Buxton Farms, Ltd.

Alan and Traci Cassell

City of Mount Vernon

Bernice Delong

- Muskingum Valley Park District

Chris Fletcher and Althea Dye

Dan Galbraith

Mrs. J. Warren Healea

- James and Martha McDonald
- Michael and Abby Shipley

John and Donna Horn

Jeff Montgomery

Jerry Simpson

Janet Kohr

- Arc of Appalachia

Bruce and Kathy Lanker

- Jeff and Pat Wells

Dalton and Norma Magers

- Dustin and Tara Durbin

Robert McFarland

Richard and Nancy Montgomery

Philander Chase Conservancy

R.E. Simpson

- John and Rebecca Simpson

Harold Rine

David and Harriet Schwartz

- Earl and Kelly Holbrook

Ian and Charlotte Watson

Anna Williams

Bruce Williams

Jay Wilson

- Chris and Julia Bunner
- Laura S. Airing, *Trustee of the Bunner Preservation Trust*

Legend

Easement Grantors (original easement holders): blue

Successor Grantors (subsequent owners): green



Life Members

The Owl Creek Conservancy is pleased to announce four new Life Members. We are grateful to them, and to all previous Life Members, for their support of the Conservancy.

Matt and Candace Ashcraft**
Richard Ashcraft****
Kimberly Davidson and Richard Barker
Heather Schooler and Steven Barr
Barbara Barry

Dr. Allan Bazzoli

Curtis Bechtel+
Marion R. Brill 1
Janet Brunka
Maureen Buchwald **
Barry Buxton +
Alan and Traci Cassell **
Laura Chatfield
John and Abbe Cheek
William de Camp, Jr.

Carol Detmer

Beth Waller and Jay Dorsey
John and Gayle Dowalter

Althea Dye and Christopher Fletcher++

Daniel W. Galbraith *****2,6
Jim and Kim Giles
Douglas and Susan Givens
Howard and Sarah Gratz
Carolin Hahnemann
Robert and Cornelia Hallinan
Mrs. J. Warren Healea 3
Ray and Pat Heithaus
Susan Hendley
John and Donna Horn +
Jane Huntington
Lisa Gichner and Harry Itagaki
Jeff and Vicki Kauffman
Janet L. Kohr 4
Brad and Melinda Lanker *
Kathy Lanker ***
Jane Cowles and Dan Laskin
William Lawhon, Jr.
Mark and Pam Leonard

Robert L. McFarland 5
Robert Meier
Ed Meyers
Charles and Julie Michelson
Beverly Morse and Brian Miller
Brian and Cindy Montgomery +
Jeffery L. Montgomery *
Richard and Nancy Montgomery ***+++
Doug and Beth Morgan
Greg and Vicki Mountz
Muskingum Valley Park District
Joe and Sally Nelson
Marc and Jen Odenweller
Mike O'Neill
Steve Oster
Philander Chase Conservancy *
Mary McManus and L. Keith Plocki
Patricia Donohue and C.C. Porter
Ken and Jan Reynolds
Harold A. Rine *
Howard and Judy Sacks
Florence Short
W. Jerry Simpson *
John and Rebecca Simpson
Greg and Susan Spaid
Ann Stallard
Richard and Joan Stallard
Jim and Marcie Steen
Dennis and Tamara Swingle
John and Debbie Urton
Ian and Charlotte Watson*
Dianna and Richard D. Wetzel, Jr.
Peter White
Anna Williams+
S. Bruce Williams+
Jay M. Wilson *
John and Cyndi Woollam
Gordon and Fran Yance

Bold - New Life Member in 2025

* One Conservation Easement (CE) donated in full or in part

+ One Agricultural Easement donated in part (co-holder Ohio Department of Agriculture)

1 Conservation easement donated in memory of Patty Markee Brill

2 Conservation easement donated in memory of Mary Lucile Cooper Galbraith

3 Two conservation easements donated in memory of J. Warren Healea

4 Conservation easement donated in memory of Robert Duncan McKenzie

5 Conservation easement donated in memory of Georgia Z. and Robert O. McFarland

6 Conservation easement donated in memory of Howard Milton Galbraith



We want to connect with you!



EMAIL

info@owlcreekconservancy.org



WEBSITE

www.owlcreekconservancy.org



PHONE

740.392.6952



FACEBOOK

Owl Creek Conservancy Ohio



INSTAGRAM

Owl Creek Conservancy Ohio



Memorial Contributions since June 2024 made in memory of

Dr. Emerson L. Laird
Gina Lynn Zak

Special Thanks

Amanda Bennett, Ohio Department of Agriculture
Nick Clark and the YMCA of Mount Vernon
Rob Clendening, Knox Soil and Water Conservation District
Jay Dorsey, Water Resources Engineer, OH20, LLC
John and Gayle Dowalter, KnoxView Farm Winery
John Dowalter, Knox Consulting, LLC
Doug Gifford, Natural Resources Conservation Services
Morgan Giles, Giles Law Group, LLC
Jeff Gottke, Area Development Foundation
Carol Grubaugh, Knox County Chamber of Commerce
Dave Heithaus, Knox County Park District
Emily Heithaus, Mountainhaus Art and Design
Paul Helser, Helser Woodland Management
Amy Henriksen and the Philander Chase Conservancy
Chris Hiner, Park National Bank
Kimberlee Klesner, ADR Notable, LLC
Knox County Auditor's Office
Knox County Commissioners
Knox County Recorder's Office
Knox County Foundation
Ed Meyers, Attorney
Darrel Severns, Knox County Regional Planning Commission
Justin Smith, Knox County Tax Map Office
Matt Starr, City of Mount Vernon

Volunteers

Richard Barker
Jay Dorsey
Janet Kohr
Dan Galbraith
Jeff Kauffman
Walt Kelling

Kim Lenkei
William Stanley
Jim Steen
Christine Walker
Pat Wells
Mount Vernon Key Club